

# Surpassing Performance Surpassing Performance

## Superior Reagents, Quality Controls and Calibrators

High quality original reagents, calibrators and controls offer a complete system for our users. Cyanide free reagents allow laboratories to meet necessary environmental regulations. Complete traceability system ensures closest consistency with standard methods.



## High Quality Design

New internal structural design separates electronic components from the fluidic system, decreasing interference while at the same time allowing for easier maintenance.



## BC-3600 Auto Hematology Analyzer

### Technical Specifications

#### Parameters

WBC, Lymph#, Mid#, Gran#, Lymph%, Mid%, Gran%, RBC, HGB, HCT, MCV, MCH, MCHC, RDW, PLT, MPV and histograms for WBC, RBC, PLT

#### Principles

Electrical impedance method for cell counting and Cyanide - free for hemoglobin

#### Performance

Parameter	Linearity Range	Precision (CV%)
WBC ( $10^3/\mu\text{L}$ )	0.3 - 99.9	3.0( $\geq 4.0$ )
RBC ( $10^6/\mu\text{L}$ )	0.2 - 7.99	2.5
HGB (g/dL)	1.0 - 24.99	2.0
MCV (fL)		2.0
PLT ( $10^3/\mu\text{L}$ )	10 - 999	6( $\geq 150$ )

#### Sample Volume

Prediluted	20 $\mu\text{L}$
Whole Blood	21 $\mu\text{L}$

#### Throughput

60 samples per hour

#### Display

Large color touch screen  
Resolution: 800x600

#### Carryover

WBC, RBC, HGB $\leq 0.5\%$   
PLT $\leq 1.0\%$

#### Connectivity

4 USB ports (for external printer, software upgrade, barcode reader, keyboard and mouse), LAN port (1), RS232 (1)

#### Printout

Thermal recorder, 50mm width paper, various printout formats, external printer (optional)

#### Operating Environment

Temperature: 15 $^{\circ}\text{C}$ ~30 $^{\circ}\text{C}$   
Humidity: 30%~85%

#### Power requirement

AC 100-240V, 50/60 $\pm 1$ Hz

#### Dimensions

16 in(W) x 18 in(H) x 18 in(D)

#### Configuration

Close Tube Sampling

#### Weight

62 lbs



## BC-3600 Auto Hematology Analyzer

Pleasant Experience in Hematology Testing

**BioRich**  
Medical +1.310.993.8380  
biorichmed.com

**Mark2 Medical INC**  
**mindray**  
Preferred Distributor  
**619-347-5314**  
Mark@mark2medical.com

**BioRich**  
Medical

**mindray**  
healthcare within reach

## BC-3600 Auto Hematology Analyzer

Labs today are facing a multitude of challenges including limited laboratory budgets, increasing requirements for high quality as well as reliable products, a shortage of experienced clinicians and so on. We understand the specific needs of end users, and use them as the foundation for our new solution BC-3600. Complete with an intuitive operation system, convenient data communication interface, excellent performance, BC-3600 is a system solution for satellite labs and clinics.

- CBC+3-DIFF, 16 parameters+3 histograms
- Throughput: 60 samples per hour
- Intuitive operation system with TFT touch screen
- Enhanced performance by proven technologies
- Closed Tube Sampling
- 40,000 results storage with histograms
- High quality QC, calibrators and reagents



# User-friendly User-friendly

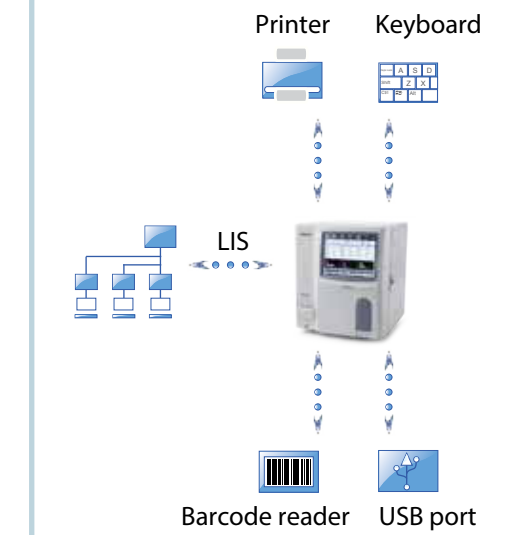
### Intuitive and Powerful Software

The well organized software interface eases your operation and gives you easy control of sample results, patient records, and report customizations. Shortcut menu simplifies your work process and improves efficiency. Distinguishable areas display WBC, RBC and PLT results clearly. Automatic maintenance programs can be executed by double-clicking the function keys while operational errors can be removed with single clicks.



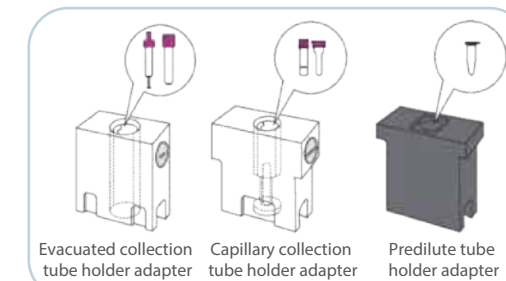
### Complete Data Communication

Integrated HL7 communication protocol for LIS connection. A wide selection of interface options are available including RS232 for computer connection, USB for QC assay values upload, barcode scanner, and key board connection.



### Intelligence and Efficiency

Efficient ZAP and flush method removes clog completely. For Closed Tube model, 3 types of tube adaptors are provided to satisfy individual laboratory needs. With the on-line reminder function, users can conveniently monitor the reagent residual volumes through the software.



**mindray**

**TE5**  
Ultrasound System



**Mark2 Medical INC**  
**mindray**  
Preferred Distributor

**619-347-5314**  
**Mark@mark2medical.com**

**BioRich**  
Medical

+1.310.993.8380  
biorichmed.com

# Professional Design for Clinical Focus

The TE5 ultrasound system is a specialty system with a unique design, where every detail has been taken into consideration to meet the needs of today's demanding ultrasound environments. With enhanced image quality and an intuitive touch enabled design, the TE5 system is an excellent choice for use across a wide range of clinical applications.

## Technologies within Reach

### eSpacial Navi™

4D magnetic needle navigation technology delivers enhanced needle visualization and location during in-plane or out-of-plane procedures. With eSpacial Navi, the needle tip and trajectory are visualized, allowing for improved physician confidence and patient safety during interventional procedures.

\* Compatible with L11-3VNs transducer

### iNeedle+™

Second generation iNeedle+ technology automatically detects needle angle and improves visibility on both linear and convex transducers during interventional procedures.

### iVocal Voice Control

Based on artificial intelligence voice recognition technology, second generation iVocal allows for a hands-free scanning experience, ideal for sterile environments.

### Wide Range of Transducers

The TE5 system offers a comprehensive portfolio of transducers for both superficial and deep tissue imaging ranging from 1 MHz to a 20 MHz ultra-high frequency transducer. In addition, the new L12-3RCs linear transducer with three programmable buttons is an excellent solution for MSK and venous access applications.

### Dual Comparison

Dual comparison provides visualization of two real-time images (or a real-time image with a stored image), side-by-side and in wide-screen format. This feature is ideal for MSK applications.



## Smart Design with Innovative Ergonomics

With a slim profile and small footprint cart, the TE5 system is easy to transport from room to room for effortless scanning at the patient's bedside. In addition, flexible mounting options for the wall or tabletop are available.

With the importance of infection control, the TE5 system's seamless touch screen and auto lock feature prevents residue buildup and makes it easy to clean and disinfect even during exams.

15" touch screen with anti-glare and wide viewing angle

15"

Elevated transducer holders for cord longevity and ideal cable management



Built-in battery provides long battery life



Wi-Fi enabled



Height adjustable



### High Definition (HD) Touch Screen

State-of-the-art fingertip operation, even with gel-covered gloves, provides simple control and setting optimization at the swipe of a finger.

### Gesture-Based Workflow

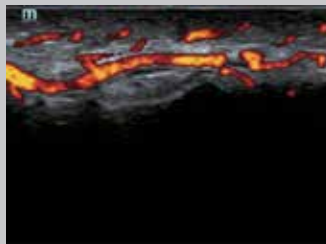
Gesture controls are the most efficient way to satisfy all clinical functions, and also allow flexibility of user-programming.

### Powerful Data Management

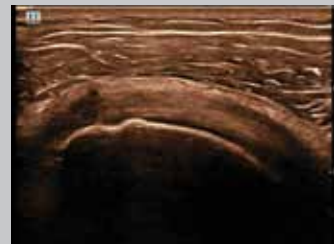
The TE5 system can support complete patient data management on-board. With a 120 GB solid state hard drive and up to 8 minutes of prospective storage, the TE5 system supports full exam recording and image archiving and review.



Breast cyst



Superficial (fingertip) vascular flow



Subscapular muscle tendon



Vein ablation with needle cross section



Humerus



In-plane vs. out-of-plane procedures

#### Mindray North America Innovation Center

2100 Gold Street  
San Jose, CA 95002

Tel: 800.288.2121 Support: 877.913.9663 [www.mindray.com](http://www.mindray.com)

©2018 Mindray D5 USA, Inc. Subject to change. Mindray® is a registered trademark of Shenzhen Mindray Bio-Medical Electronics Co. Ltd. 02/19 P/N: 0002-08-40387 Rev A

# mindray

healthcare within reach

Mark2 Medical INC  
**mindray**  
Preferred Distributor

## 619-347-5314

[Mark@mark2medical.com](mailto:Mark@mark2medical.com)



+1.310.993.8380  
[biorichmed.com](http://biorichmed.com)